

# O-Licensing Installation



Installing O-Licensing is very simple. You should [download the latest version](#) of O-Licensing to get full support from [Orient](#).

You must install two following packages:

- [The License Management and Client Redistributable package](#). It includes O-Licensing documentation and samples.
- [The Server package](#).

## System Requirements

In order to use O-Licensing, you must have one of the following systems and one of the following Framework installed on your computer:

- Operating systems:
  - Windows 2000.
  - Windows 2003.
  - Windows XP.
- Framework:
  - .NET Framework 2.0.

With each O-Licensing component, you must have some addition requirements installed on your computer:

- License Management:
  - WSE 3.0 and above.
- Activation Server:
  - IIS 5.0 and above.
  - Database: Depend on the Data Storage which you choose, one of the following Database must be installed:
    - MS SQL Server 2000 or MS SQL Server 2005.
    - MS Access 2000 or MS Access XP or MS Access 2003.
- Management Server:
  - IIS 5.0 and above.
  - WSE 3.0 and above.
  - Database: Depend on the Data Storage which you choose, one of the following Database must be installed:
    - MS SQL Server 2000 or MS SQL Server 2005.
    - MS Access 2000 or MS Access XP or MS Access 2003.

## Install License Management and Client Redistributable package

Run the ClientLicensing.msi file to launch the Setup Wizard. Then follow the instruction to install Client O-Licensing. You can choose not to install Client O-Licensing at any time by clicking *Cancel*.

1. In the welcome screen, click *Next* to go to the next installing page.



Figure 1: Install Client package, welcome.

2. Please read the End User License Agreement carefully. If you agree with all terms, select "I accept the terms in the License Agreement" and click *Next* to continue installing; otherwise click *Cancel* to exit the Setup Wizard.

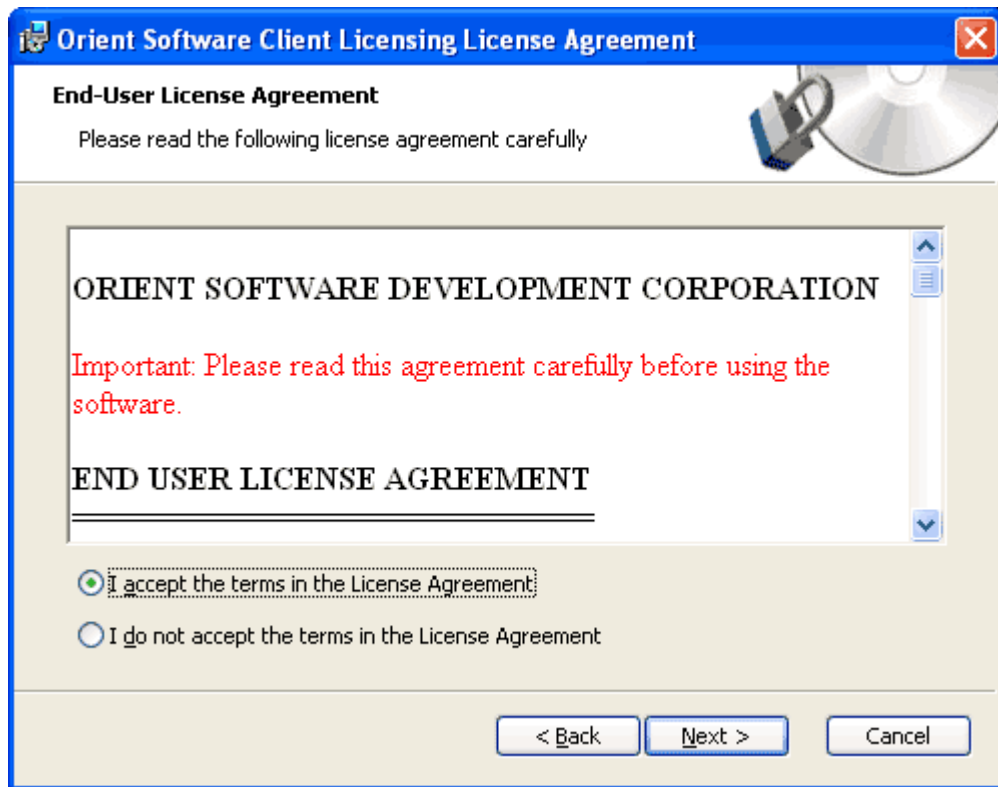


Figure 2: Install Client package, EULA.

3. Please choose the location on which you want Client O-Licensing to be installed. If you want to change the location, click *Browse* and select the folder that you want to install on. You can see how much disk resource Client O-Licensing costs by clicking *Disk Usage*. Then click *Next* to continue.

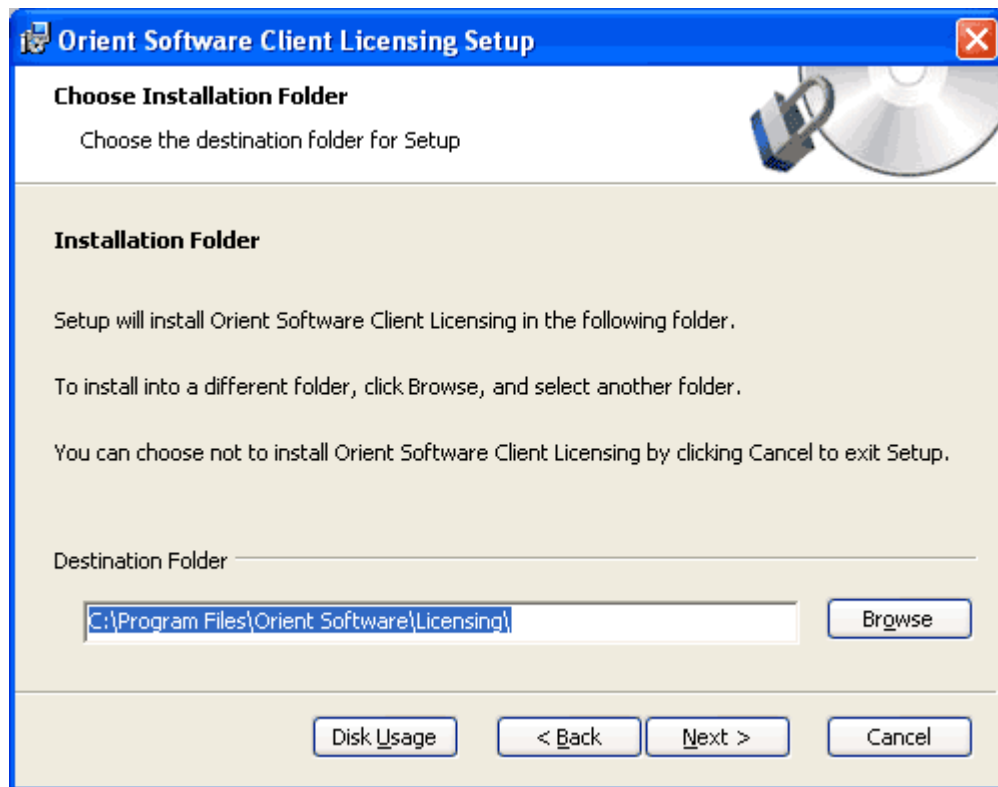


Figure 3: Install Client package, choose location.

4. In the next page, verify what you did and click *Install* to start installing Client O-Licensing with the settings you selected in previous steps.

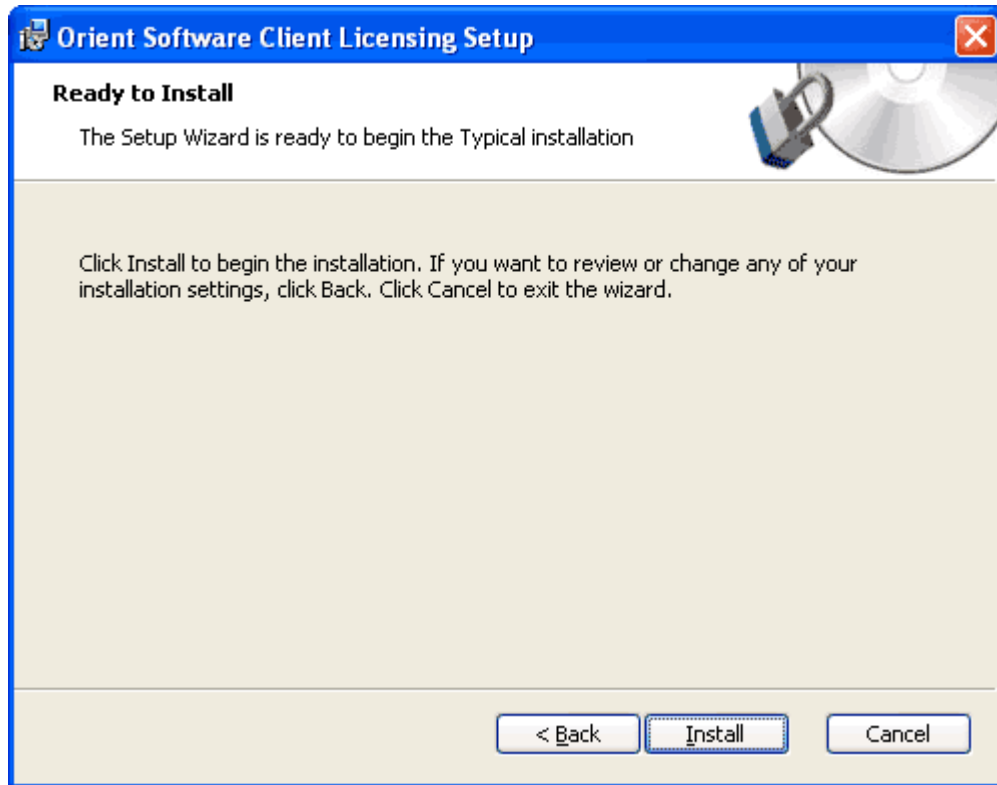


Figure 4: Install Client package, ready to install.

5. Please wait a moment while O-Licensing setup processes installation.

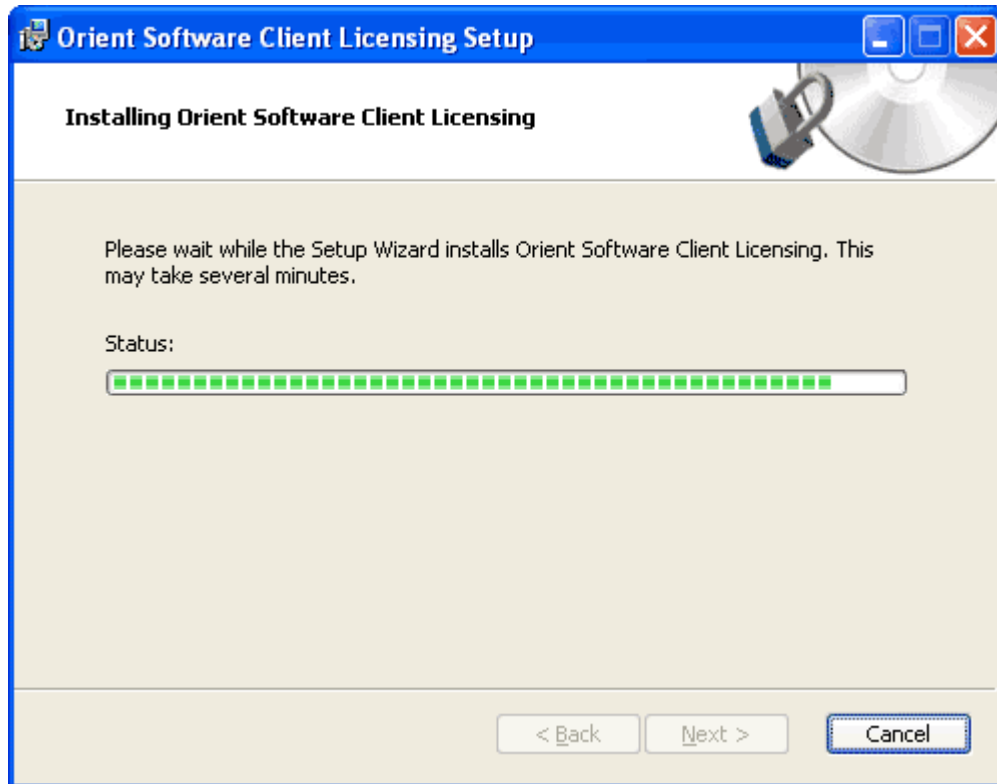


Figure 5: Install Client package, processing installation.

6. Click *Finish* to exit Setup. You can check *Launch Orient Software Client Licensing* to run License Management immediately.

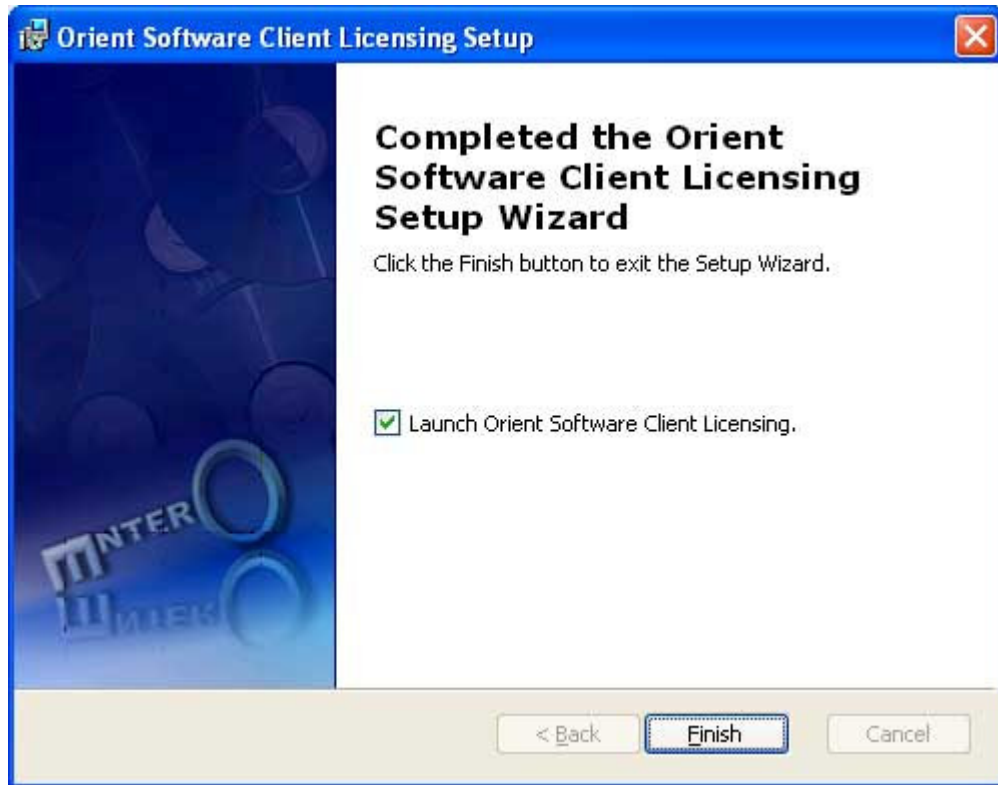


Figure 6: Install Client package, finish

Client O-Licensing installation is now completed.

## Install Server package

The Server Installation package includes Activation Server and Management Server.

Run the ServerLicensing.msi file to launch the Setup Wizard. Then follow the instruction to install Server O-Licensing. You can choose not to install Server O-Licensing at any time by clicking *Cancel*.

1. In the welcome screen, click *Next* to go to the next installing page.



Figure 1: Install Server package, welcome.

2. Please read the End User License Agreement carefully. If you agree with all terms, select "I accept the terms in the License Agreement" and click *Next* to continue installing; otherwise click *Cancel* to exit the Setup Wizard.

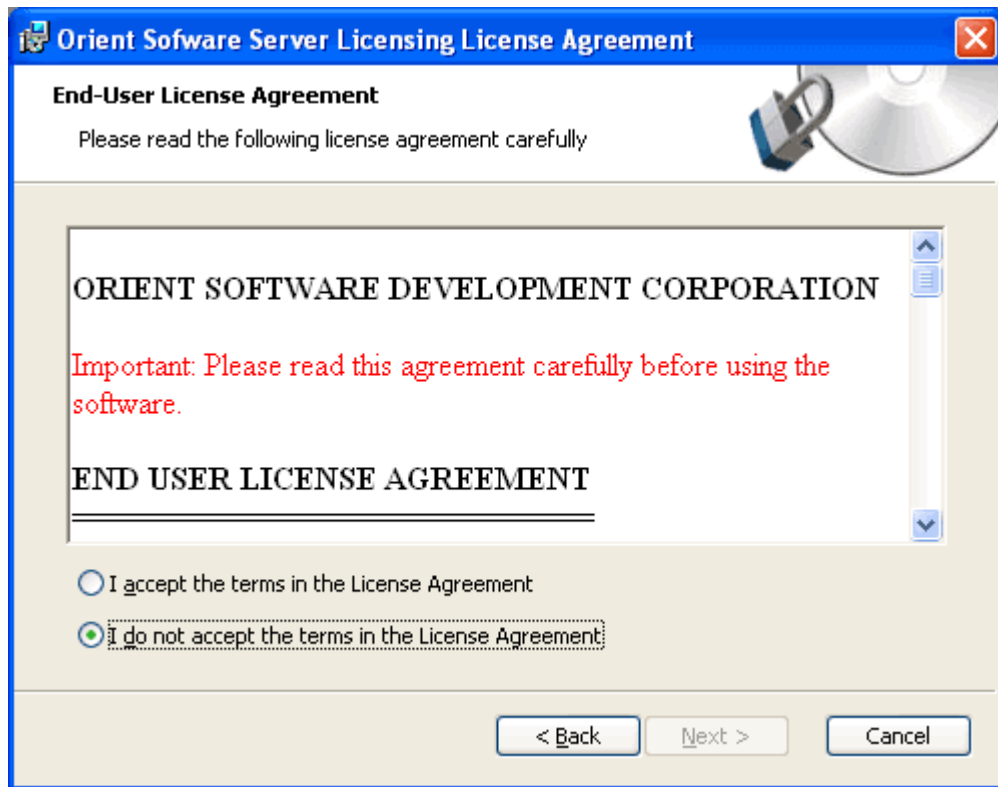


Figure 2: Install Server package, EULA.

3. Please choose the setup type that you want to install. Choose *Typical* or *Complete* to install both Servers. These Servers will be installed in [ProgramFilesFolder]\Orient Software\Licensing\ folder. Choose *Custom* to change some features of Server O-Licensing.

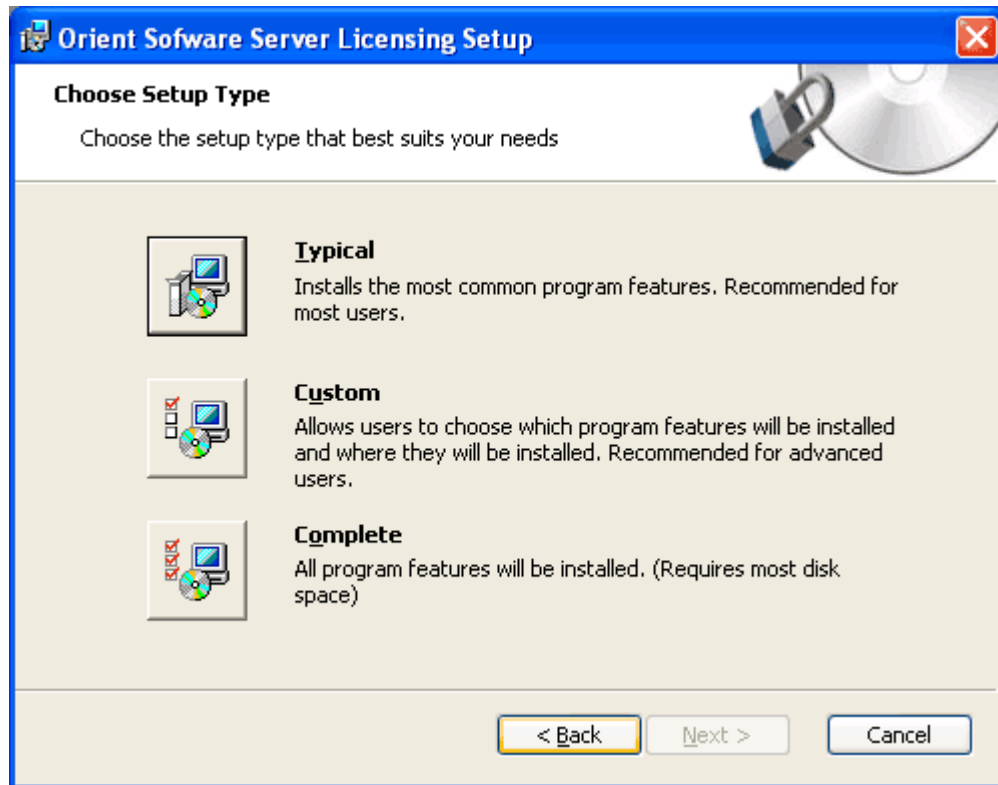


Figure 4: Install Server package, choose setup type.

4. If you choose *Custom*, select components that you want to install on your machine or deselect if you don't want. If you want to change the installing location of Server O-Licensing, click *Browse* and select the folder that you want to install on. You can see how much disk resource Server O-Licensing costs by clicking *Disk Usage*. To install Server O-Licensing as default, click *Reset*. Then click *Next* to continue.

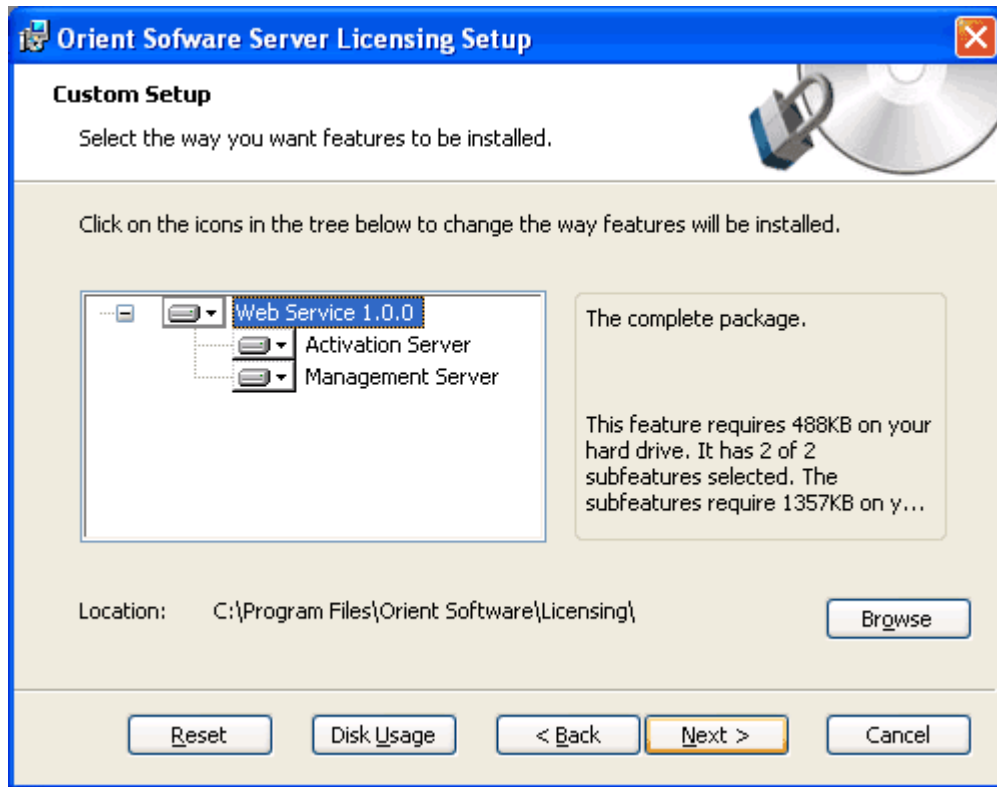


Figure 5: Install Server package, Custom setup.

5. In the next page, verify what you did and click *Install* to start installing Server O-Licensing with the settings you selected in previous steps.

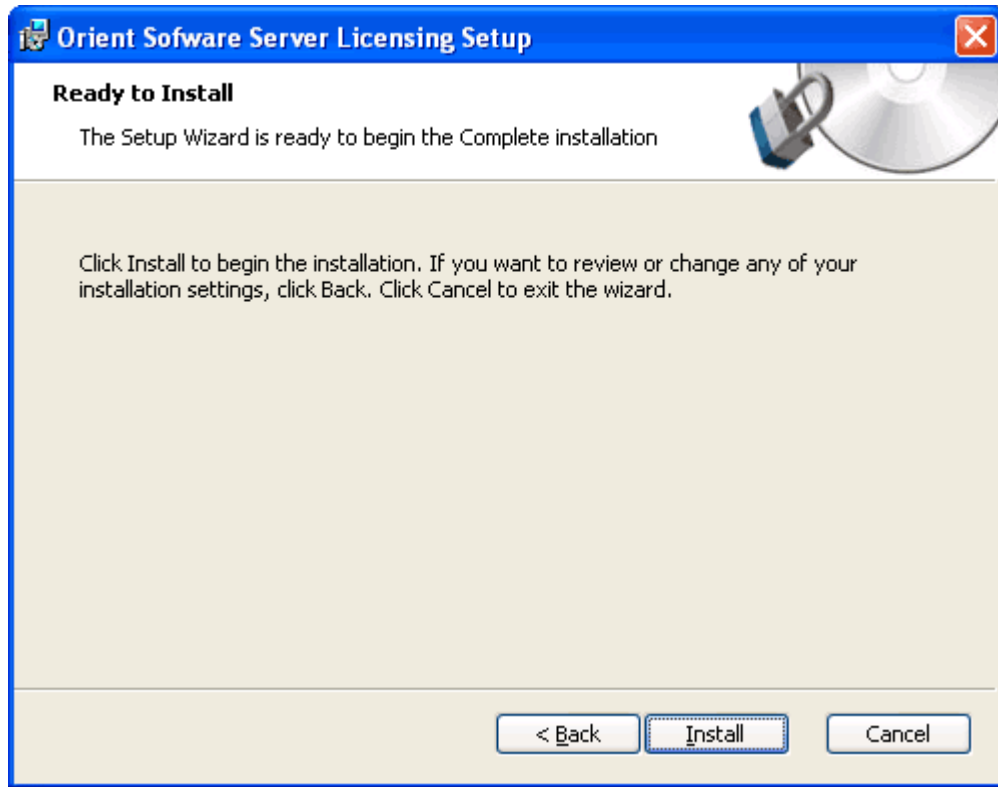


Figure 6: Install Server package, ready to install.

6. Please wait a moment while Server O-Licensing Setup Wizard processes installation.

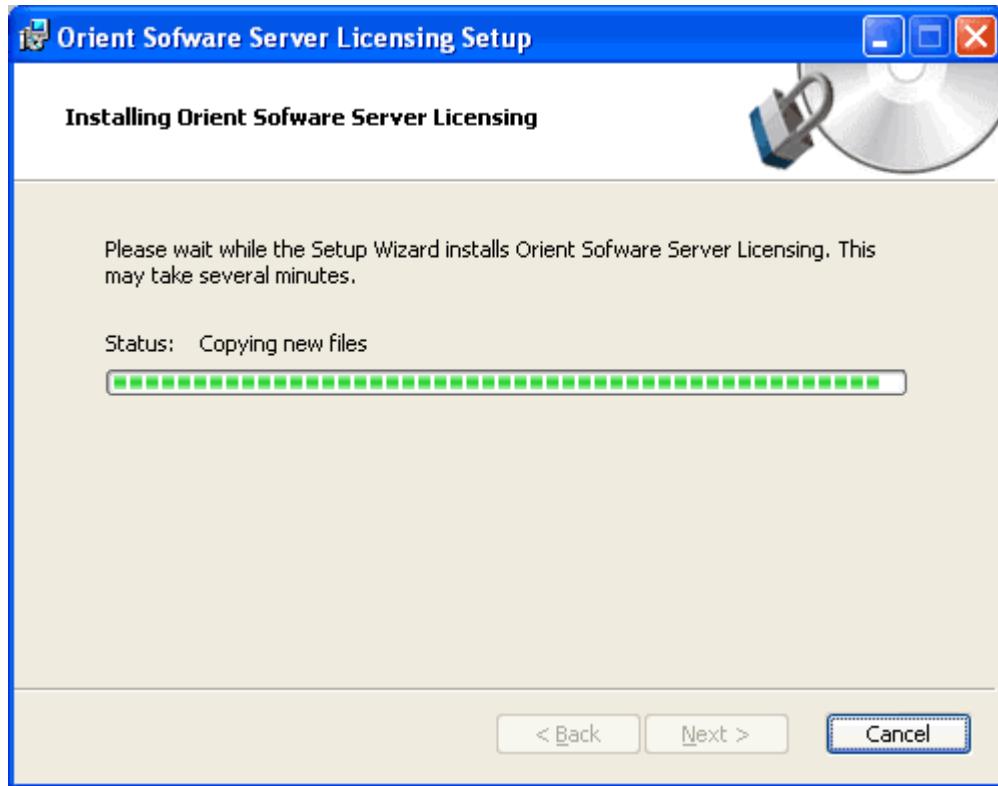


Figure 7: Install Server package, processing installation.

7. While processing installation, Server O-Licensing Setup Wizard will demand installing Data Storage for Server O-Licensing. You can choose Data Storage as File System, MS Access or MS SQL. Then click *Install* to install the Data Storage.

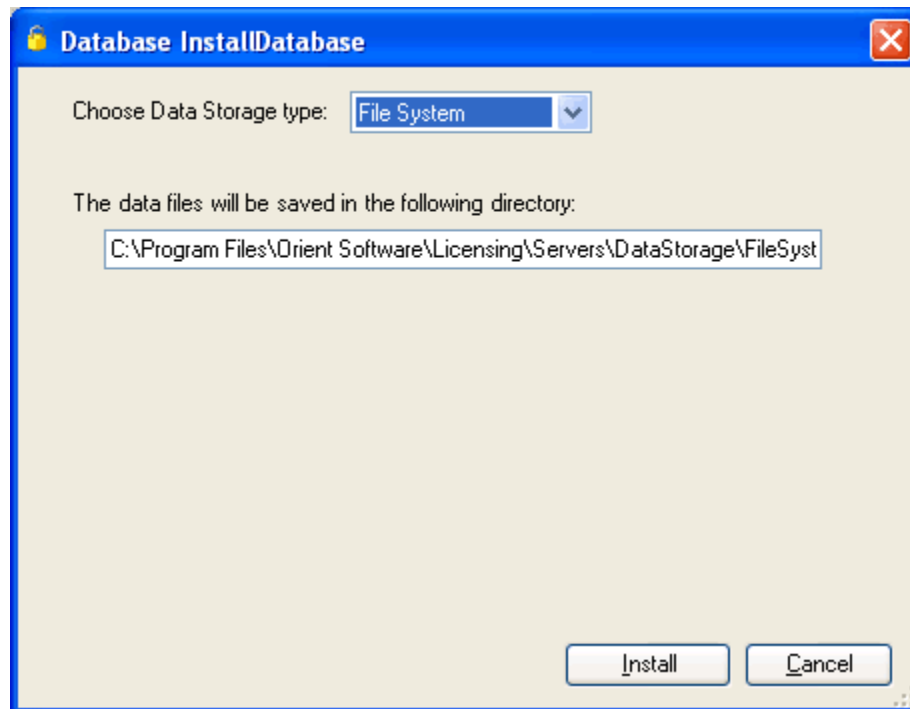


Figure 8: Install Server package, File System Data Storage.

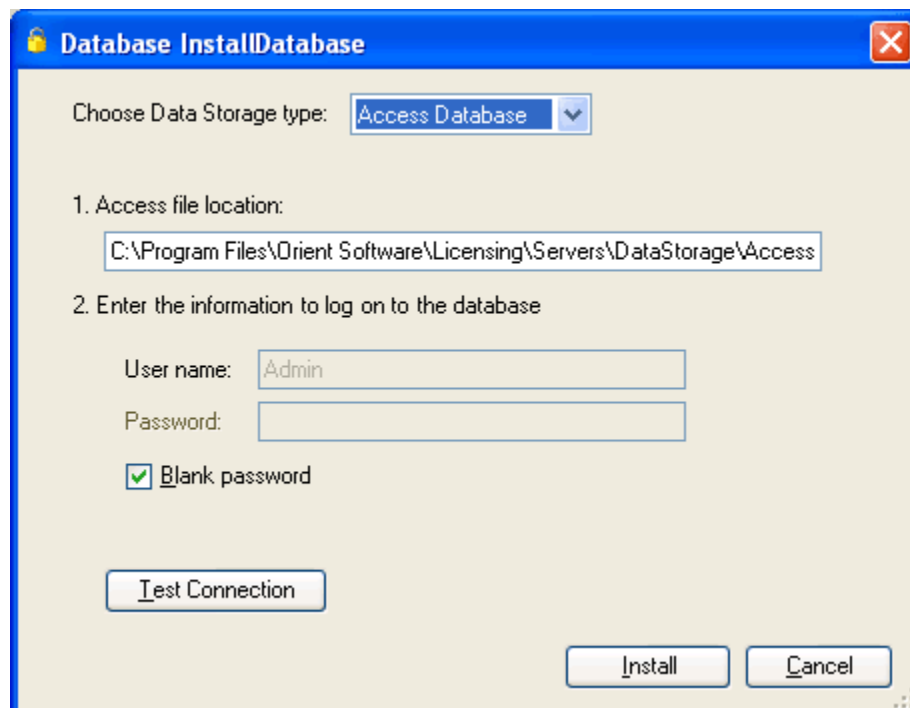


Figure 9: Install Server package, MS Access Data Storage.

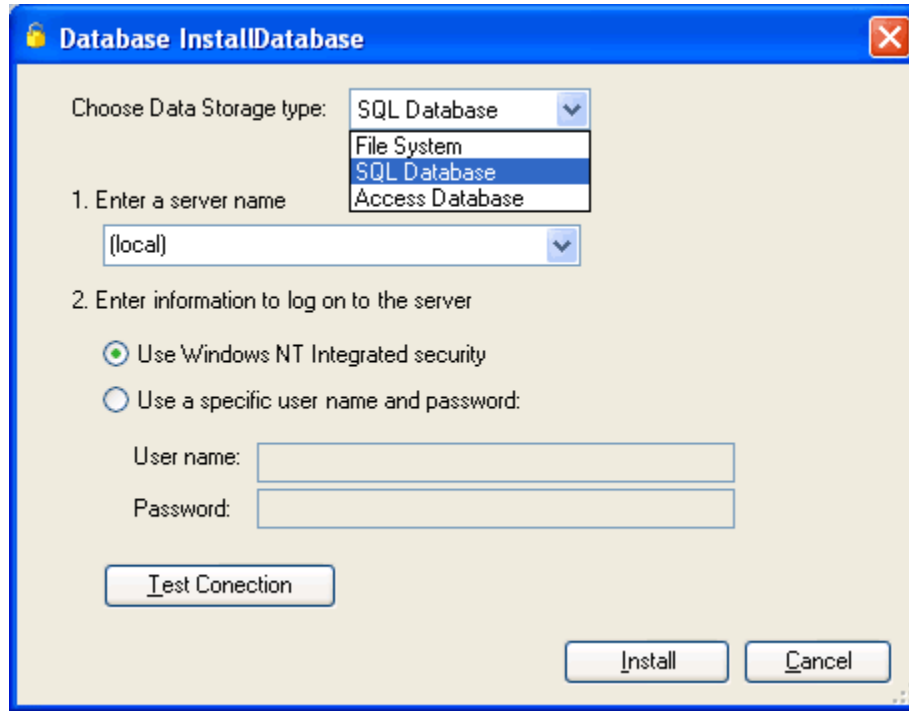


Figure 10: Install Server package, MS SQL Data Storage.

*Notes:*

- If you set Data Storage as File System and change the directory to save the data files (or you set Data Storage as MS Access and change the location of the access file), you must set permissions for the directory (or the access file) in order for *Everyone* to have full control on this directory (or the access file) after installing complete.
- If you set Data Storage as MS Access or MS SQL, you should *Test Connection* before installing.
- You can skip this step and configure the web configuration after installation has completed (see O-Licensing Documentation for more information about configuring Servers O-Licensing).

8. Wait a minute when Server O-Licensing Setup Wizard installs Data Storage, then click *Finish* to exit the installation.

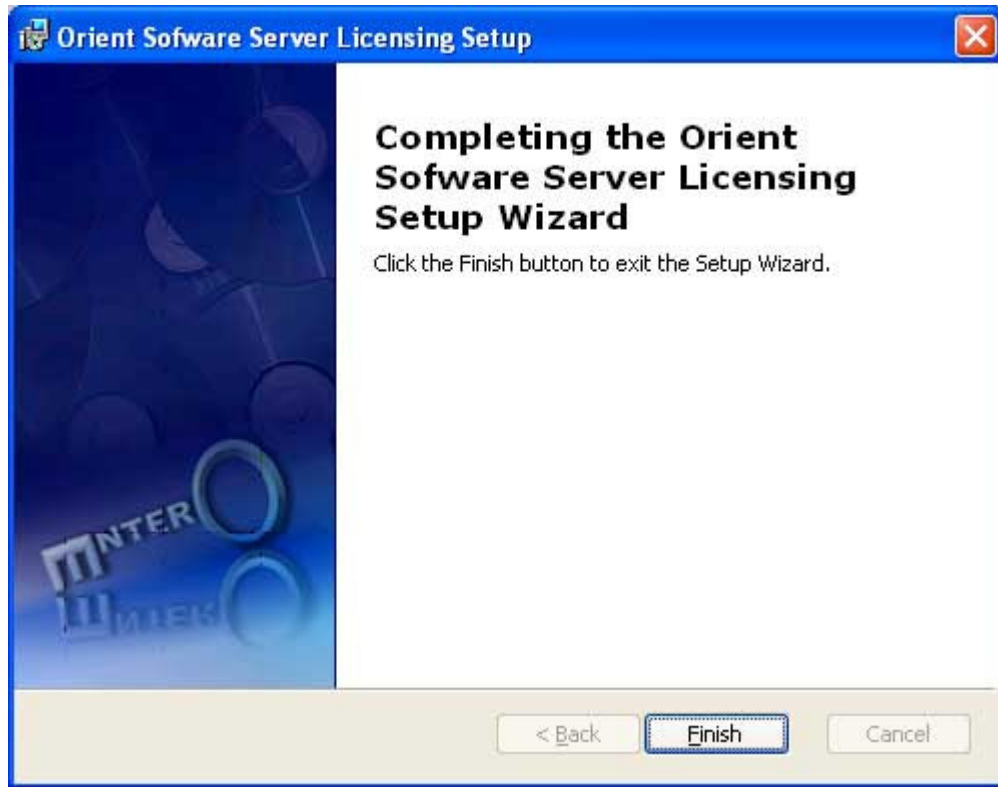


Figure 6: Install Server package, finish.

Server O-Licensing installation is now completed.